

# ISYMOST™

Structures modeling and analysis management

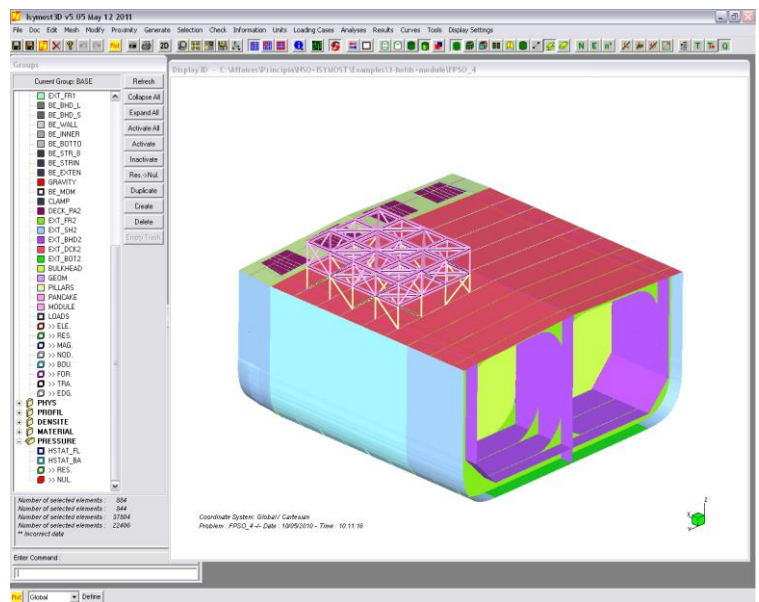
ISYMOST is designed to help engineers managing the analysis of structures.

It offers modeling, pre- and post-processing for various calculations programs.

ISYMOST can handle simple or very complex models thanks to its data management system.

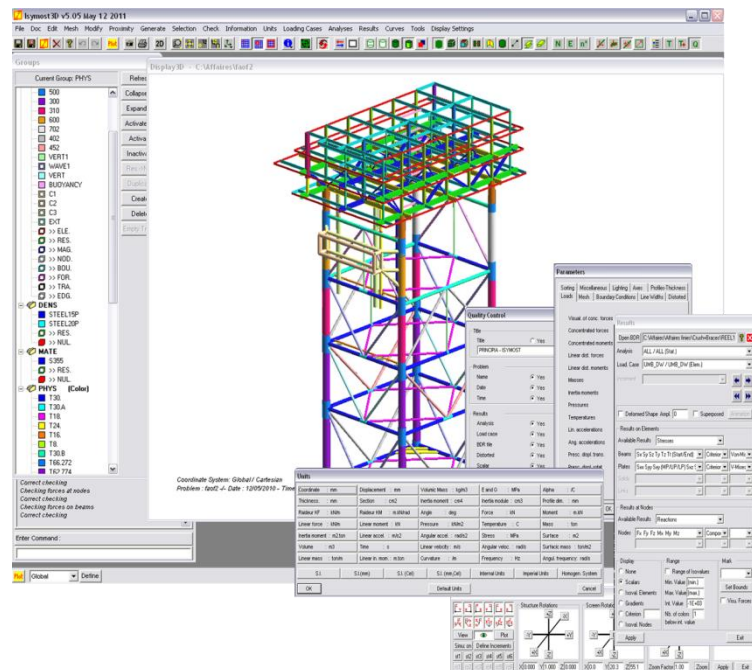
Recent developments have improved dramatically the interface, making ISYMOST learning curves even shorter.

The new interface combined to its long-known powerful macro-programming capabilities makes ISYMOST easy-to-use yet productive software.



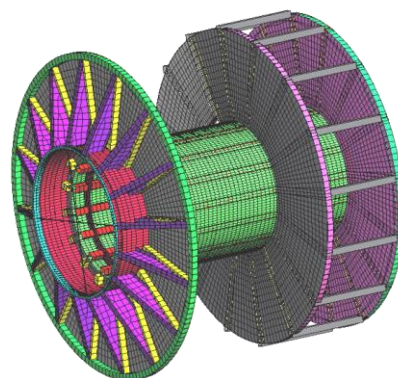
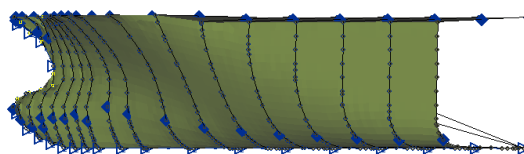
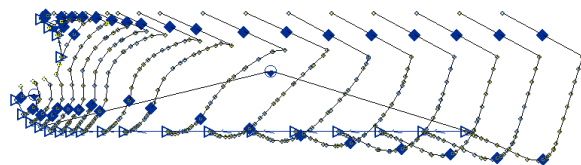
## Main features

- ◆ User-friendly interface
- ◆ Advanced meshing capabilities
- ◆ Efficient data management
- ◆ Extensive graphical model data checks
- ◆ Easy boundary conditions and connectors definition
- ◆ Comprehensive list of standard profiles (BS, EN, JIS, ASME...)
- ◆ Fully interfaced with FASTRUDL / NSO, DIODORE, ABAQUS, SACS
- ◆ Management of hydro-structure coupling
- ◆ Conversion tools to/from numerous FEM programs
- ◆ Single data file for all analyses
- ◆ Powerful post-processing capabilities



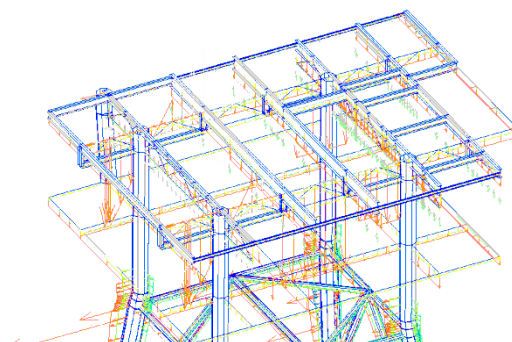
## Modeling

- ◆ The user interface includes a model browser and 3D view window allowing very efficient model set-up and easy verifications
- ◆ Advanced display options available from toolbar: numerous lighting options, meshing edges, profiles shape, eccentricities, releases, etc...
- ◆ Project-oriented model files including all data and parameters required to run several analyses from the same file
- ◆ Automated mesh of complex lofted surfaces
- ◆ Tools to generate tubular intersections, code check parameters, boundary conditions, etc...
- ◆ Management of sub-models for local verifications
- ◆ Management of hydro-structure coupling for static and dynamic analyses



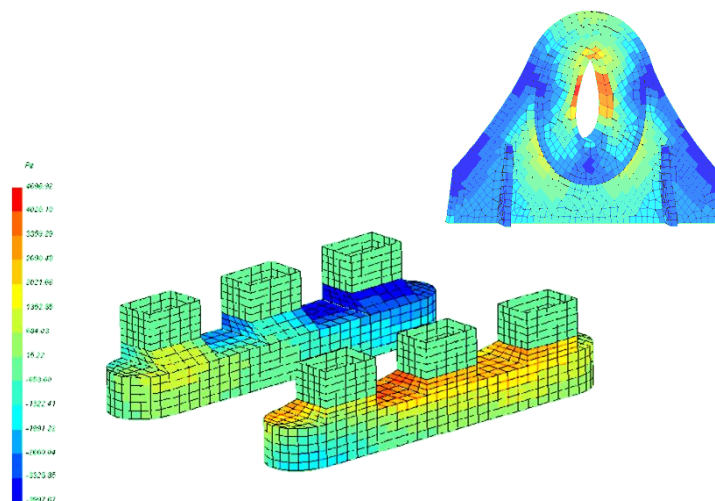
## Verification of models

- ◆ Pre-defined mesh checks (superposed nodes, twisted elements, alignment of beams, crossed beams...)
- ◆ Export to PDMS and DXF formats for sharing with draught-persons
- ◆ Automatic verification of consistency of models prior to calculation
- ◆ Display of calculation data (buckling length, unsupported length, density...)
- ◆ Verification of MTO, load case resultants...



## Post-processing

- ◆ Display of joint displacements, forces stresses in elements, code check usage factor
- ◆ Display of deformation, modal shapes
- ◆ Envelope of any variable for sets of load cases
- ◆ Macro-programming for specialized post-process



## Technical support

Best in class client support is provided by emailing: [nso-isymost@principia.fr](mailto:nso-isymost@principia.fr). Our team of experienced engineers will be pleased to answer all your queries.

EUROPE-FRANCE (head office)  
 PRINCIPIA  
 ZI Athélie – 215 Voie Ariane  
 13705 LA CIOTAT Cedex  
 Tel: + 33(0) 442 98 11 80  
 Fax: + 33(0) 442 98 11 89

1 rue de la Noé  
 BP 22112  
 44321 NANTES Cedex 3  
 Tél: + 33(0) 240 14 50 14  
 Fax: + 33(0) 240 14 34 00  
[commercial@principia.fr](mailto:commercial@principia.fr)

EUROPE DENMARK  
 PRINCIPIA NORTH  
 Kullinggade 29  
 5700 Svendborg  
 Tel: +45 62 228 228  
[commercial@principia-north.dk](mailto:commercial@principia-north.dk)



**PRINCIPIA**

INNOVATIVE ENGINEERING  
 WITH COST-SAVING  
 SOLUTIONS  
[www.principia.fr](http://www.principia.fr)

ASIA MALAYSIA  
 PRINCIPIA ASIA Sdn Bhd  
 Suite 23A-2, Level 23A, Wisma UOA II  
 21 Jalan Pinang  
 50450 Kuala Lumpur Malaysia  
 Tel : +6032166 0400  
 HP : +65 810 130 99  
[business@principia-asia.com](mailto:business@principia-asia.com)

ASIA VIETNAM  
 PETROPARTNER (PRINCIPIA'S DISTRIBUTOR)  
 Petroleum Partnership Company Limited  
 Suite 141, 14th Floor, Ree Tower  
 9 Doan Van Bo Street, Ward 12, District 4,  
 Ho Chi Minh City, Vietnam  
 Tel: +84-8-38268998  
 HP: +84 906898125  
[hanhph@petropartner.vn](mailto:hanhph@petropartner.vn)